

Kevin Laycock : Quilt Grid Pattern.

Born in 1962, Kevin Laycock is an abstract artist and amateur classical musician based in Leeds. Since completing his MA at the Royal College of Art, Laycock has exhibited throughout the UK. He has also been a Lecturer in Art and Design History and Practice at the University of Leeds from 2001 - 2024. Prior to this, he taught widely, including the Chelsea School of Art and Design, the Glasgow School of Art and Loughborough University.

Collision, 2009, was a collaboration between Laycock and celebrated English composer Michael Berkeley CBE, and it testifies to his concern with the inter-relationship between art and music. A digital installation, *Collision* was the practice element of Laycock's doctoral research, *The translation and interpretation of the structural elements of Michael Berkeley's musical compositions through painting and digital media*. In *Collision*, the artists have created an illusory environment, which upon entry, is designed to invoke feelings of peace and tranquillity in the viewer. The sequencing of the work is important too, with each of the seven works taking something from the last, building into a single, holistic collection. *Collision* toured to a number of art and ecclesiastical venues in England and Ireland (2009-13). Four elegant inkjet prints in editions of 10 are available as shown below.



Collision – installation at Gallery Oldham, April – June 2009

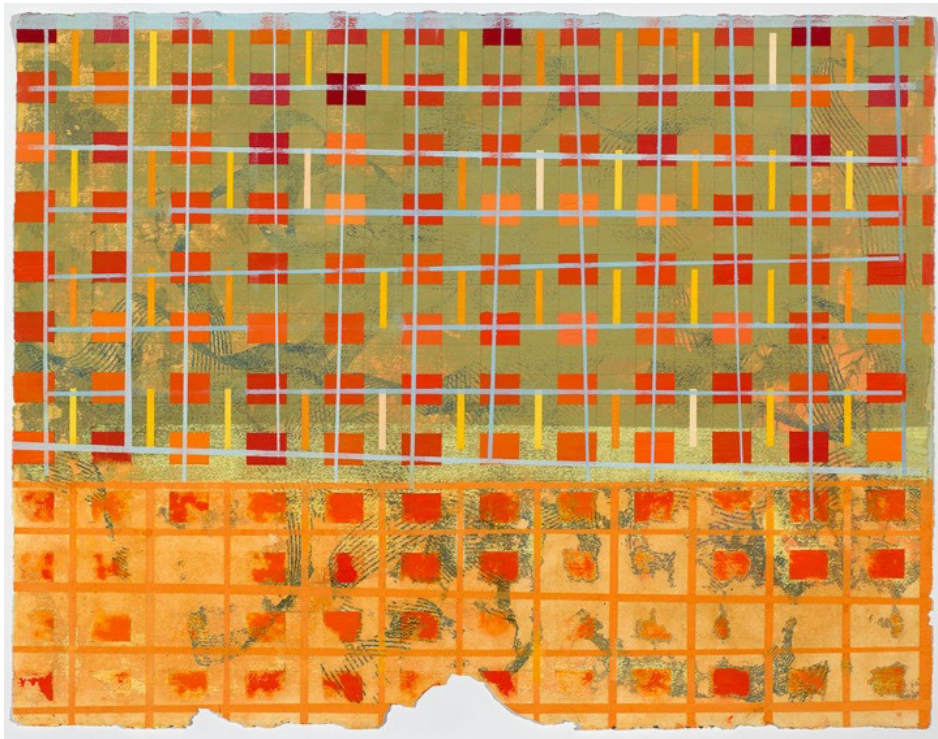
Quilt | Grid | Pattern exhibition by Dr Christopher Harris & Dr Kevin Laycock at the Atkinson, Southport

In his recent work titled *Inventions*, Laycock continues his exploration of quilters textile assemblages such as those of the Gee's Bend Quilters - a collective of African-American women based in Alabama, USA. Of these Laycock comments, *'I find the bold division of picture plane, the stark geometric designs and the vibrant colour palette completely arresting'*. Textiles have been an element of longstanding interest in Laycock's practice and as well as the powerful abstractions of the Gee's Bend quilts he had a more recent encounter with the remarkable textile collection in the National Trust's Gawthorpe Hall in Lancashire – their late 19th Century geometric quilts in particular. With fellow artist Chris Harris, Laycock produced a new body of paintings illustrated below for an exhibition at Southport Museum and Gallery, at the invitation of its Director Stephen Whittle. (A catalogue is available).

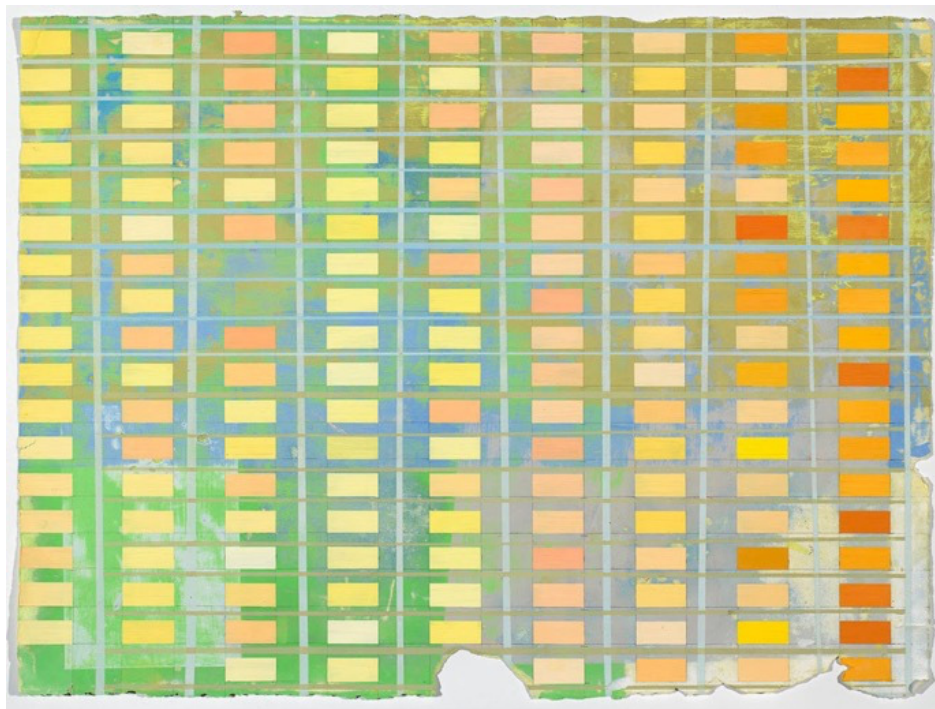
For further details, please contact me at clare@artfirst.co.uk.



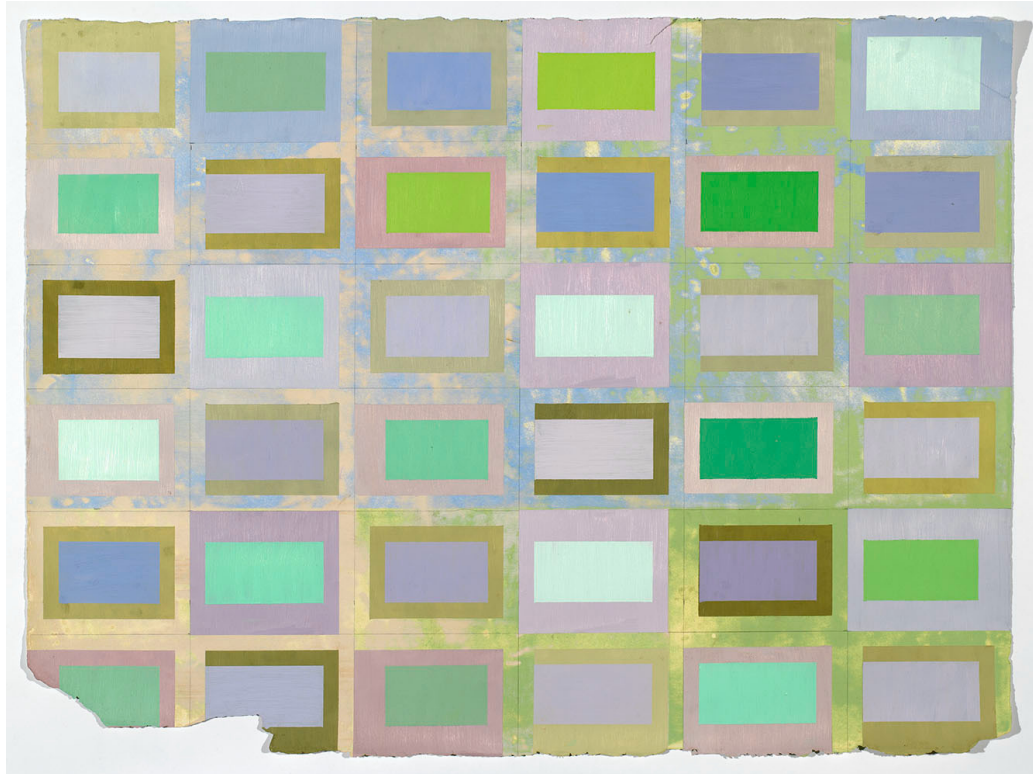
Invention 1 – after Gee's Bend quiltmakers, 2018, oil on paper, 55 x 71cm, £4,000



Coronach I, 2009, oil on paper, 55 x 71cm, £4,000



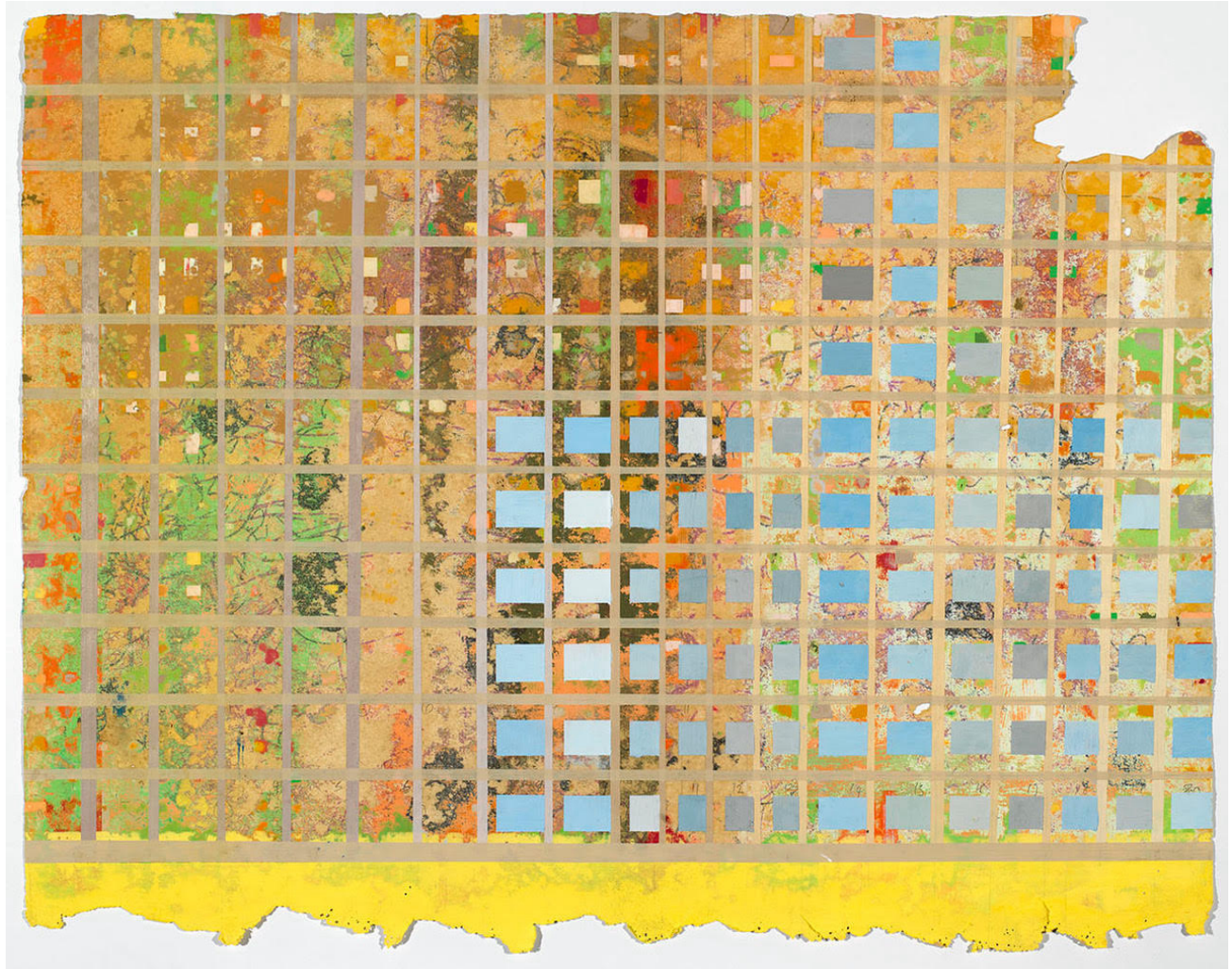
Coronach 2, 2009, oil on paper, 55 x 71cm, £4,000



Coronach 3, 2009, oil on paper, 55 x 71cm



Elegy 2, 2009, oil on paper, 55 x 71cm, £4,000



Elegy 1, 2009, oil on paper, 55 x 71cm £4,000



Invention 1 – after Gawthorpe quilt collection, 2023, oil on paper, 56 x 77 cm, £4,000



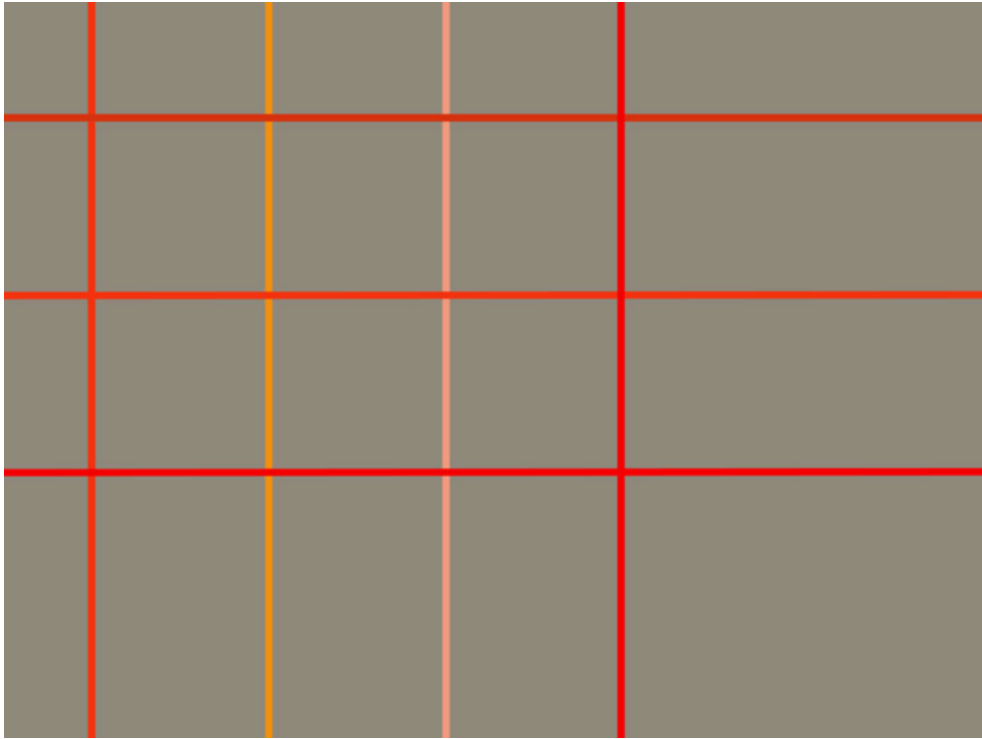
Invention 2 – after Gawthorpe quilt collection, 2023, oil on paper, 56 x 77 cm, £4,000



Invention 3 – after Gawthorpe quilt collection, 2023, oil on paper, 56 x 77 cm, £4,000



Invention 4 – after Gawthorpe quilt collection, 2023, oil on paper, 56 x 72 cm, £4,000



Collision Series C, 2011, archival inkjet print, edition of 10, 54 x 69 cm, £330 each signed by Kevin Laycock & Michael Berkeley



Collision Series D, 2011, archival inkjet print, edition of 10, 54 x 69 cm, £330 each signed by Kevin Laycock & Michael Berkeley